

### Excavators



**Model**

Gross horsepower  
Operating weight  
Bucket capacity



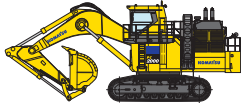
**PC500LC-10R**  
270 kW @ 1,900 rpm  
49,400 - 51,300 kg  
2.5 - 4.0 m<sup>3</sup>



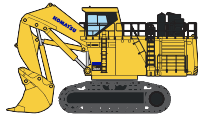
**PC850-8R1**  
370 kW @ 1,800 rpm  
78,600 - 79,800 kg  
3.4 - 4.5 m<sup>3</sup>



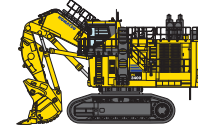
**PC1250-11R**  
578 kW @ 1,800 rpm  
116,400 - 118,800 kg  
3.4 - 7.0 m<sup>3</sup>



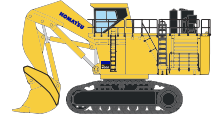
**PC2000-11R**  
794 kW @ 1,800 rpm  
201,400 - 205,700 kg  
12.0 - 14.0 m<sup>3</sup>



**PC3000-6**  
940 kW @ 1,800 rpm  
258,000 - 263,000 kg  
16.0 m<sup>3</sup> (Front shovel)



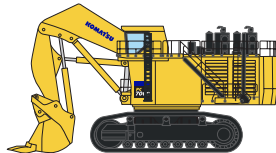
**PC3400-11M0**  
1,190 kW @ 1,800rpm  
317,700 kg  
19.0 m<sup>3</sup> (Front shovel)



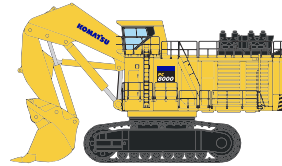
**PC4000-11**  
1,400 kW @ 1,800 rpm  
398,000 - 403,000 kg  
22.0 m<sup>3</sup> (Front shovel)



**PC5500-6**  
2x940 kW @ 1,800 rpm  
533,000 - 546,000 kg  
29.0 m<sup>3</sup> (Front shovel)



**PC7000-11**  
2x1,250 kW @ 1,800 rpm  
682,000 - 692,000 kg  
38.0 m<sup>3</sup> (Front shovel)



**PC8000-11**  
2x1,500 kW @ 1,800 rpm  
769,000 - 782,000 kg  
42.0 m<sup>3</sup> (Front shovel)



### Wheel loaders



**Model**

Gross horsepower  
Operating weight  
Bucket capacity



**WA470-6R**  
204 kW @ 2,000 rpm  
23,205 - 24,955 kg  
3.6 - 5.2 m<sup>3</sup>



**WA500-6R**  
266 kW @ 1,900 rpm  
33,150 - 34,470 kg  
4.3 - 5.6 m<sup>3</sup>



**WA600-6R**  
396 kW @ 1,800 rpm  
52,320 - 52,900 kg  
6.4 - 7.0 m<sup>3</sup>



**WA900-8R**  
672 kW @ 2,050 rpm  
117,300 - 118,340 kg  
11.5 - 13.0 m<sup>3</sup>



**WA1200-6**  
1,411 kW @ 1,800 rpm  
216,200 - 220,600 kg  
16.5 - 35.0 m<sup>3</sup>



### Service and Solutions



**Consulting**

Remote monitoring,  
case management and  
embedded resources



**Data analytics**

Advanced KPI reporting,  
visualization and  
benchmarking



**Global training**

Professional  
development



**Performance assurance**

Sustaining the value  
proposition

**Learn more**





Dump trucks



**Model**  
Gross horsepower  
Gross vehicle weight  
Payload



**HD325-7R**  
386 kw @ 2,000 rpm  
69,280 kg  
36.5 mt



**HD465-7R**  
551 kW @ 2,000 rpm  
99,680 kg  
55.0 mt



**HD605-7R**  
551 kW @ 2,000 rpm  
110,180 kg  
63.0 mt



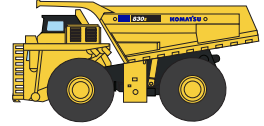
**HD785-7**  
895 kw @ 1,900 rpm  
163,780 kg  
91.7 mt



**HD1500-8**  
1,175 kW @ 1,900 rpm  
249,575 kg  
141.9 mt



**730E-10**  
1,492 kw @ 1,900 rpm  
338,075 kg  
186.0 mt



**830E-5**  
1,865 kw @ 1,800 rpm  
408,875 kg  
227.0 mt



**HM400-3R**  
338 kW @ 2,000 rpm  
74,005 kg  
40.0 mt



Dozers



**Model**  
Gross horsepower  
Operating weight  
Blade capacity



**D155A-6**  
268 kw @ 1,900 rpm  
41,700 kg  
9.4m<sup>3</sup> (Semi-U)



**D275A-5R**  
337 kw @ 2,000 rpm  
50,850 kg  
16.6 m<sup>3</sup> (Semi-U)



**D375A-6R**  
474 kw @ 1,800 rpm  
70,235 kg  
18.5 m<sup>3</sup> (Semi-U)



**D475A-5E0**  
671 kW @ 2,000 rpm  
108,390 kg  
27.2m<sup>3</sup> (Semi-U)



Motor graders



**Model**  
Gross horsepower  
Operating weight  
Blade length



**GD755-5R**  
216 kw @ 2,000 rpm  
24,380 kg  
4.3 m



**GD825A-2**  
223 kW @ 2,100 rpm  
31,655 kg  
4.9 m



**GD955-7**  
318 kw @ 1,900 rpm  
46,740 - 47,990 kg  
5.5 m / 6.1 m